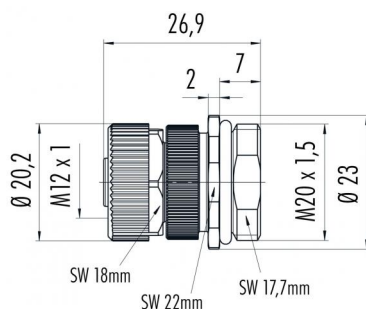


Product description	M12-S female panel mount connector, Contacts: 3+PE, screw clamp, IP68, UL, VDE
Area	M12-S series 814
Order number	99 0694 500 04

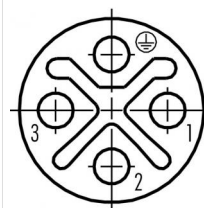
Illustration



Scale drawing



Contact arrangement (Plug-in side)



- 1 black
- 2 black
- 3 black
- 4 yellow/green

You can find the assembly instructions on the next page.

Technical data

General values

Connector design	female panel mount connector
Connector locking system	screw
Termination	screw clamp
Wire gauge (mm)	max. 1.50 mm ²
Wire gauge (AWG)	max. 16
Upper limit temperature	85 °C
Customs tariff number	85369010
Packaging Unit	100

Cable data

Approval 1	UL
Approval 2	VDE

Electrical values

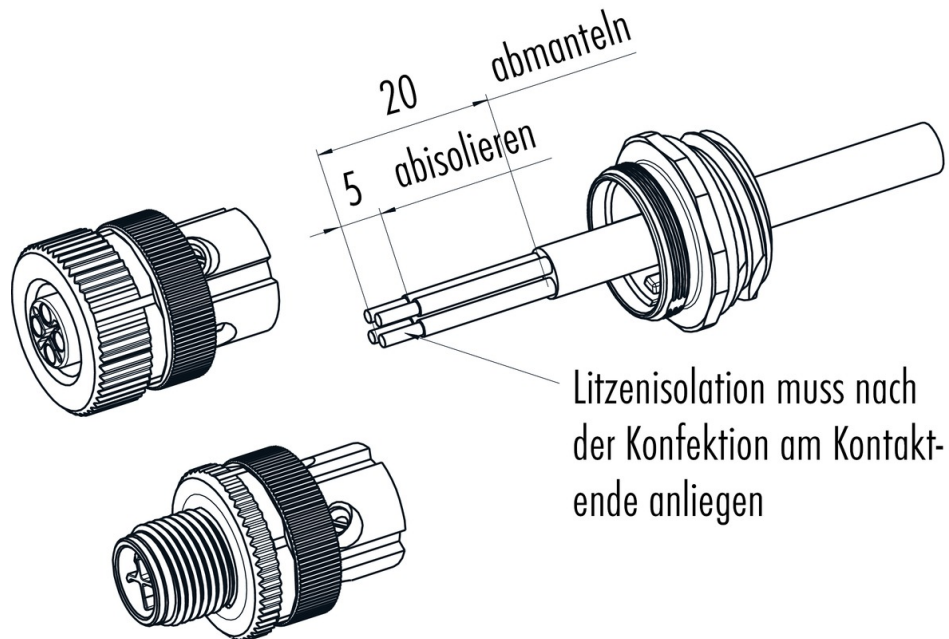
Rated current (40 °C)	12 A
Rated voltage	630 V
Rated impulse voltage	6000 V
Pollution degree	3
Overvoltage category	III
Insulating material group	III
Degree of protection	IP68
Mechanical operation	> 100 Mating cycles

Material

Contact material	CuZn (brass)
Contact plating	Au (gold)
Contact body material	PA
Housing material	PA
REACH SVHC	CAS 7439-92-1 (Lead)

Product description	M12-S female panel mount connector, Contacts: 3+PE, screw clamp, IP68, UL, VDE
Area	M12-S series 814
Order number	99 0694 500 04

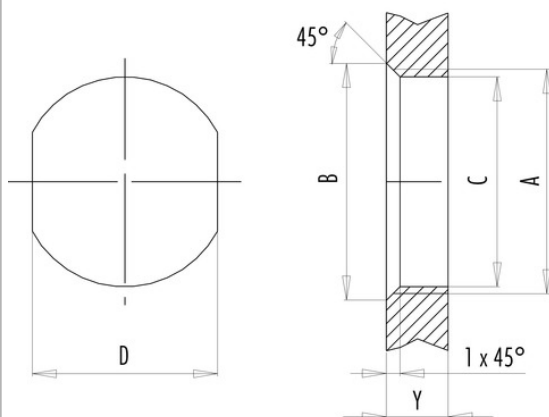
Assembly instructions / Panel cut-out



Assembly instructions / Panel cut-out

With flats as anti-rotation device

With bore hole



Installation direction: o-ring sits on chamfer.

Thread	Measures			Tightening torque	
	B (mm)	C (mm)	D (mm)	Metal housing/ Positioning sleeve	Plastic housing/ Positioning sleeve
M16 x 1,5	17,0	16,1	13,5	1,25 Nm	1,25 Nm
M20 x 1,5	21,0	20,1	—	2 Nm	1,25 Nm

Thickness of wall Y (mm)		
Version	min (mm)	max (mm)
Fastened from back side	2	3,5
Front fastened	2	4,5
Screw clamp	2	3,5

Product description	M12-S female panel mount connector, Contacts: 3+PE, screw clamp, IP68, UL, VDE
Area	M12-S series 814
Order number	99 0694 500 04

Security notices

The connector must not be connected or separated under load. Non-observance and incorrect use can result in personal injury.

The connectors are designed for use in plant, control system and electrical equipment. The end user is responsible for checking whether the connectors are suitable for use in other applications.

The end user must take suitable safety measures to ensure that the connector cannot be disconnected accidentally. Connectors with degree of protection IP 67 and IP 68 are not suitable for use under water. When used outdoors, the connectors must be separately protected against corrosion. For further information about IP degrees of protection refer to 'Technical support' in the Download Centre.